



The CORE MPO Bicycle and Pedestrian Facility Study is a regional planning effort led by the Coastal Region Metropolitan Planning Organization (CORE MPO) to improve safety, connectivity, and accessibility for people walking and biking across the Savannah metropolitan region.

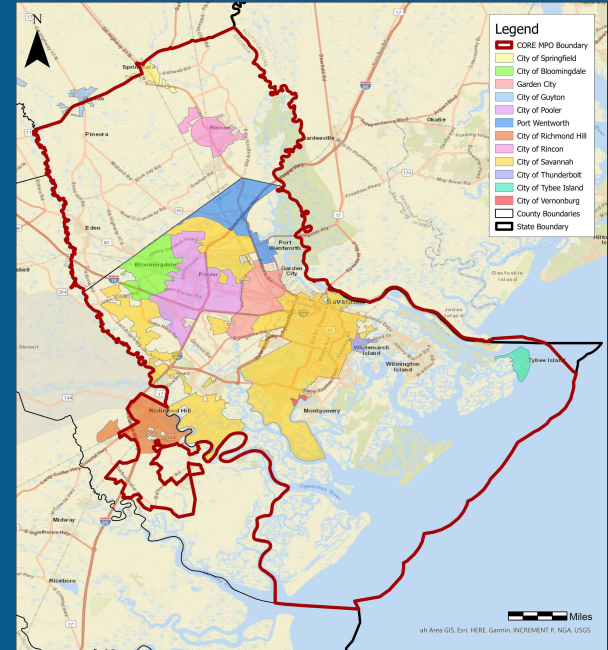
## Study Goal

This effort brings together data from past local plans and develop a comprehensive inventory of existing sidewalks, trails, and bike facilities in the region to create a unified regional vision for active transportation.

## Why It Matters

This assessment highlights where gaps exist, helps the region prioritize improvements, and positions communities to be eligible for future funding opportunities for projects.

## CORE MPO Region



Scan the QR code or visit [www.corempobikeped.org](http://www.corempobikeped.org) to access the project website & give you input via surveys.

## Get Involved

Your voice helps shape safer, more connected walking and biking networks across the region. Participate in any of the ways below:



**Learn More on Project Website:** [www.corempobikeped.org](http://www.corempobikeped.org)



**Take Online Survey:** [www.tinyurl.com/COREBikePedSurvey](http://www.tinyurl.com/COREBikePedSurvey)



**Map Your Experiences:** [www.tinyurl.com/COREBikePedMap](http://www.tinyurl.com/COREBikePedMap)



**Text Your Input:** Text **COREBikePed** to 912-214-4944



**Join the Mailing List:** [www.tinyurl.com/COREBikePedMailing](http://www.tinyurl.com/COREBikePedMailing)

## Study Timeline

Phase 4: Final Recommendations

Phase 3: Plan Development

Phase 2: Need Assessment & Visioning

Phase 1: Existing Facilities Inventory

Fall 2025

Winter 2025/2026

Spring 2026

Summer 2026

Fall 2026